



Swindon Domestic Abuse Forum
Friday 1st March 2024
0930-1200

Please put your name and role in the chat.

House Keeping

- Welcome
- Recording
- Please give your name and role/post in the chat
- Microphones muted unless speaking
- Cameras
- Use chat/raise hand to ask a question
- Evaluation form – no certificates
- Presentation slides

TIME	SUBJECT	PRESENTERS
0930	Housekeeping – opening.	Sandie Arrell-Stoneham
0935	NSPCC ‘Speak Out Stay Safe Programme	Sarah Smith, NSPCC Schools Coordinator
1000	Therapeutic Services for Victims of Sexual Violence and Assault - FearFree	Kate Williams, FearFree
1025	Courts Process for Domestic Abuse Victims (Report findings)	Liz Dominey, Soroptimists
1040	Lived Experience Survey Preliminary Findings	Jo-Ann Smith, DA Project Officer, CSP
1055	Family Safeguarding Model Update	Marilyn Thompson and Juliana Tomegea, Family Safeguarding
1115	Break	
1120	Bobby Van Trust	Sally Raubenheimer Bobby Van Trust
1135	Open 2 Change update	Sam Garcia SWA
1145	Information Share	Sandie Arrell-Stoneham to highlight Chair of group
1200	Close	

NSPCC

NSPCC School Service

Sarah Smith
Schools Coordinator
BANES, Wiltshire & Swindon

sarah.smith@NSPCC.org.uk

Tel: 0756 2204886

EVERY CHILDHOOD IS WORTH FIGHTING FOR



Speak out. Stay safe in Swindon primary schools

- We recommend schools deliver Speak out. Stay safe at least once every 3 years.
- 93% of Swindon Primary schools have received SOSS since it's launch in 2012
- 58 Swindon schools have delivered SOSS since Sept 2020 using our virtual materials
- 20 Swindon schools delivered SOSS in 2022/23. 8 have used this year with another 10 planning to before end of this academic year.



What is Speak out. Stay safe?



'Speak Out. Stay safe.' online programme is designed to support your RSE Curriculum and help you deliver key safeguarding messages to your children in an age- appropriate way.

The programme helps children:

- understand abuse in all its forms and recognise the signs of abuse.
- understand that abuse is never a child's fault, and that they have the right to be safe.
- know how to get help, and the sources of help available to them, including our Childline service.

The programme resources are available through a private link: [SOSS resources](#)
[2023 | NSPCC Learning](#)

Delivering Speak out. Stay safe.

Deliver the programme

Resources for schools in Wales

SEND ASN ALN resources

Let us know what you think

Delivering Speak out Stay safe

It's easy to deliver Speak out Stay safe.

First, tell your Schools Co-ordinator when you plan to run the programme and talk to us if you can fundraise at the same time.

Then follow the five simple steps to deliver the Speak out Stay safe programme.

1. Let parents and carers know +

2. Show the virtual assemblies +

3. Deliver the follow up lesson +

4. Hold the workshops +

5. Give us feedback and get your certificate +

Responding to safeguarding concerns

Sometimes you may become aware of safeguarding concerns or children may disclose abuse during the Speak out Stay safe programme. If this occurs, it's important to follow your school safeguarding procedures.

Assembly content for children aged 5 – 7 Years



Introduction from Ant and Dec and meet Buddy



Children's Rights



Sam's story – speaking out to safe adults.



Different forms of hurt explained in age appropriate way



Think about safe adults and in and out of school.



Learn about Childline and how to get in touch.

Assembly content for children aged 7– 11 Years



Introduction from
Ant and Dec



Different types of
worries and safe
adults to talk to

Sexual abuse

- * When a child is being made, asked, or rewarded for doing anything with their body that frightens or worries them – or being made to do this to somebody else.
- * It can involve touching, kissing or being made to show private parts of the body, or being made to do this to another person.
- * It can involve being shown inappropriate films or pictures in books, magazines, on TV, mobile phones or online.
- * The private parts of the body are those covered by underwear.

Different types of
abuse explained
simply



Safe adults



Contacting
Childline



Ali's story and
speaking out



Children's
Rights

Defining of emotional abuse for 7 – 11 year olds



Emotional abuse

- * When an adult deliberately hurts a child's feelings.
- * This could be by making someone feel sad, making fun of them, or making them feel bad about themselves.
- * Seeing or hearing parents or carers hurt each other can also make a child feel bad. This is called domestic abuse.
- * It hurts on the inside, and doesn't leave a mark that can be seen.

Speak out. Stay safe

Follow up lesson plans & resources

- Recap the assembly messages
- Recap Ways of child could be hurt/definitions of abuse via a matching activity
- Identify safe adults – create class poster and child's own list
- Explore the ChildLine website
- Create a poster to show what we have learned about ChildLine
- Plenary game

My name: _____

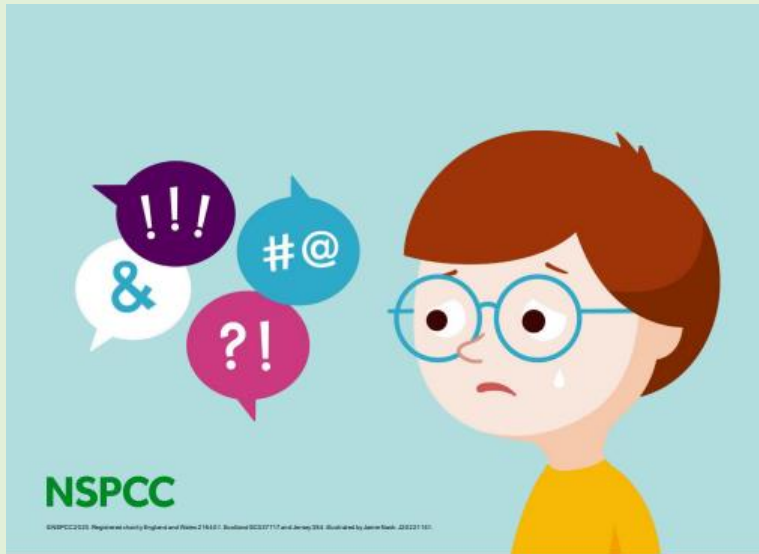
My safe adults are...



I know a child has the right to be kept safe
I know who to talk to if I need help

Speak out. Stay safe

Follow up lesson plans & resources



My name: _____

My safe adults are...

Draw or write
your safe adults
from in school and
outside school



I know a child has the right to be kept safe
I know who to talk to if I need help

BUDDY ZONE

Hi, thanks so much for visiting my page. Some of you may remember me from when I came to one of your assemblies. But if not, my name's Buddy, lovely to meet you.

On this Page

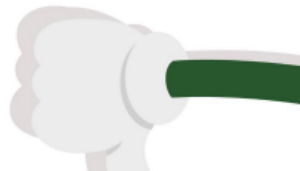
Welcome Message
Getting Help
How to tell someone



Speak out. Stay safe Follow up lesson plans & resources

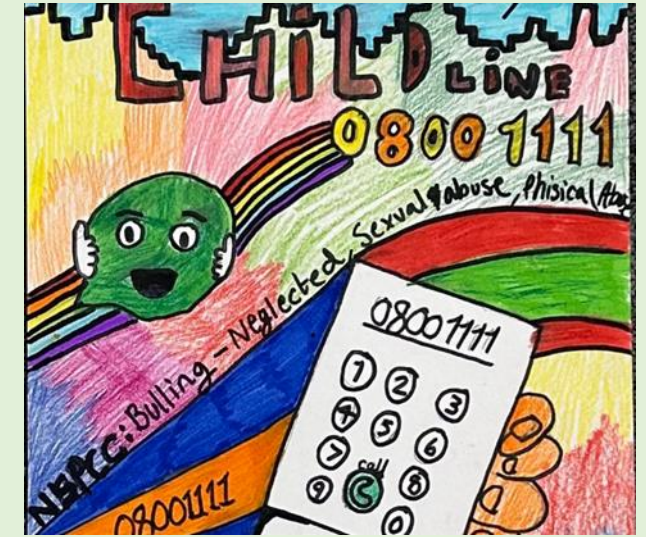
Sexual abuse

- * When a child is being made or asked to do anything with their body that frightens or worries them – or being made to do this to somebody else.
- * It can involve touching, kissing or being made to show private parts of the body, or being made to do this to another person.
- * It can involve being shown inappropriate films or pictures in books, magazines, on TV, mobile phones or online.
- * The private parts of the body are those covered by underwear.



Physical abuse

- * This is when someone deliberately hurts or injures a child's body.
- * This could be by kicking, biting, hitting, shaking or leaving marks.
- * Physical abuse may cause pain, cuts, bruising and / or broken bones.



NSPCC

EVERY

INFO AND ADVICE

Feeling worried or want to find out about something? You've come to the right place! Choose from the different worries below.



Bullying

Find out what counts as bullying and how to get support.



Deaf zone

Get advice and support if you are deaf or hard of hearing.



Emotional abuse

It's not ok for someone to hurt your feelings. We can help.



Family

Sometimes families can argue but we've got advice to help.

Display Materials

Display board example

Here's an example of how you could present your display board, along with some top tips.

Alternative SOSS border.

Speak out. Stay safe. with Buddy

Speak out. Stay safe.

with **Buddy**

If you're 5-7 years old visit:
Childline.org.uk/buddy

If you're 7-11 years old visit:
Childline.org.uk/kids

Remember Childline is always here
0800 1111

All children have the right to:

Speak out
Be kept safe
Get help when they need it

NSPCC

Our school's safeguarding team

Remember you can talk to your safe adults

Interchangeable activity can be swapped out. Option of using speech bubbles or placards to encourage children to engage with the messages.

The Childline website and phone number should be the main focus of your display board.

Feel free to share your anonymised displays with us on social media using the hashtag **#SpeakOutStaySafe**

Make sure to include the NSPCC branding so staff and parents know where the materials come from and that they can be trusted.

Use this frame to display your school's safeguarding team.

This is a key message, include a reminder on speaking to a safe adult.

Illustration with key messages look best at the bottom of the board due to where the illustration finishes.

Supporting staff with responding to disclosures



NSPCC
'Learning'

Let children know you're listening

A **safeguarding resource** to help you show children and young people that, whatever they want to share, you're ready to listen. **There are three simple directions to remember...**

➤ Show you care, help them **open up**

Give them your full attention and keep your body language open and encouraging. Be compassionate, be understanding and reassure them their feelings are important. Phrases like "you've shown such courage today" help.

➤ Take your time, **slow down**

Respect pauses and don't interrupt them – let them go at their own pace. Recognise and respond to their body language. And remember that it may take several conversations for them to share what's happened to them.

➤ Show you understand, **reflect back**

Make it clear you're interested in what they're telling you. Reflect back what they've said to check your understanding – and use their language to show it's their experience.

+ Find out more

For more training and resources to help protect children visit nspcc.org.uk/listen



Volunteer-led Workshop visit

6-7 year olds (Y2) Workshop

- 30 minutes
- Recaps assembly content
- Sam's story retelling – emotional abuse and speaking out
- Who might be a safe adult?
- Buddy kits



9 - 11 year olds (Y5 & 6) Workshop

- 1 hour
- Recaps assembly content
- Is it OK? Discussion activity - identifying sexual abuse
- Guy's story – recognising neglect and speaking out
- Speak out. Stay safe kits



9 – 11yrs workshop

What do you think?

Is it OK for people in a child's home to hurt each other?



‘It’s normal for people at home to argue sometimes. But if it happens all the time, or it makes a child feel confused or upset, this is not OK.’

Speak out. Stay safe - SEND



Speak out. Stay safe.
Safeguarding children with
additional needs and disabilities

- Aimed at 9-11 years old
- Activities and resources to help pupils understand what abuse is and learn strategies to keep safe.
- Can be adapted to meet a wide range of needs and abilities (MLD/ASD).
- Can be used alongside main SOSS programme or stand alone.
- *BSL and subtitled version of the main assembly are available*

We can offer your school a 30-minute virtual information sessions, providing a chance for you and your staff to find out more about the range of **FREE** resources available to support safeguarding pupils with **SEND/additional needs** at your school.

NSPCC

Talk Relationships

**Support for secondary school teachers & leaders
to confidently deliver inclusive sex & relationships
education**

nspcclearning.org.uk/talkrelationships

EVERY CHILDHOOD IS WORTH FIGHTING FOR



What is Talk Relationships?

Talk Relationships supports secondary school teachers to confidently deliver sex and relationships education. Our aim is for all secondary-school-aged young people to understand healthy relationships, and how to seek help, in a safe and responsive education environment.

As part of the NSPCC 10 Year Strategy 21-31

Sexual Abuse in Education

Why Secondary Schools?

OFSTED Review 2021

Physical and non-physical forms of sexual abuse are commonplace within secondary schools

A third of child sexual abuse is committed by other children or young people
(Hackett, 2014)

Everyone Invited

50,00 testimonies of people's experience of sexual violence & harassment at school & university

Your Best Friend Report

Coercive & controlling behaviours are so common in young people's social circles they consider them normal **(Safelives 2021)**

53.9% of young people told us that relationships education in schools 'rarely' or 'never' covers what they want to know
(NSPCC 2022)

79% of girls aged 13 and above reported that contact sexual abuse happened a lot or sometimes between people their age.
(OFSTED 2021)

What Teachers are telling us

Almost half of secondary school teachers (46%) said they do not feel confident about teaching SRE.

(NASWUT 2022)

86% feel they need more resources and training.

(NASWUT 2022)

Teachers feel they lack confidence to deliver 'sensitive' topics e.g. pornography, consent, Harmful Sexual Behaviour and sexual harassment.

29% of teachers have had no RSE training

(Sex Ed Forum 2018)

What is Talk Relationships?



An e-learning course for educators to help them feel confident when delivering sex & relationships education



An e-learning course for school leaders; implementing a whole school approach



14 lesson plans created by experts from PSHE Association & NSPCC



6 specialist lesson plans for young people with SEND/ASN/ALN



A dedicated helpline to provide advice and guidance to secondary school educators who deliver sex education

Call **0800 389 5347** or email **help@nspcc.org.uk** with "Talk Relationships" in the subject line. We are available from 8am-10pm Monday to Friday and 9am-6pm on Saturday and Sunday.

Teacher Feedback - pilot

98% teachers felt the course was effective or very effective

83% teachers felt the training was relevant to their work with children and young people

“If asked to teach Sex & Relationships education I now feel more confident at knowing more about the subject matter and how to deal with certain situations”

“It has made me consider the way I interact with all my students when dealing with sensitive issues”

Talk Relationships Resources can be accessed via the NSPCC Learning website.

Overview

Elearning

Lesson plans 

Helpline

FAQs

Delivering sex and relationships education

Talk Relationships is a service to ensure secondary school-aged young people can learn about sex and relationships in a safe education environment that recognises, responds to, and prevents abuse.

Talk Relationships includes:

- **elearning courses** to support secondary school educators to feel confident when delivering sex and relationships education and responding to abusive behaviours
- a series of **lesson plans** created by sex and relationships education experts from the PSHE Association and the NSPCC
- a **dedicated helpline** to provide advice and guidance to secondary school educators who deliver sex education.



Visit

<https://learning.nspcc.org.uk/services/talk-relationships>

or Google “NSPCC Talk Relationships”

Transition and resources for ages 11-12



Transition to secondary school



Changing friendships



Healthy online friendships



Hurtful behaviour

Resources for ages 12- 14



Healthy relationships



Sexualised media



Safer online relationships



Sexual harassment and harmful sexual behaviour



Consent



Sharing of nudes

Resources for ages 14-16



Rights, trust and values



Communication and readiness



Unhealthy relationships



Pornography

SEND Resources



Healthy relationships (including friendships)



Communicating online



Personal space and my boundaries



Consent



Public and private



Sharing nudes



A dedicated helpline to provide advice and guidance to secondary school educators who deliver sex and relationships education.

Call **0800 389 5347** or email **help@nspcc.org.uk** with "Talk Relationships" in the subject line.
We are available from 8am-10pm Monday to Friday and 9am-6pm on Saturday and Sunday.

NSPCC



Thank you for your support!

Sarah Smith
Schools Coordinator
BANES, Wiltshire & Swindon

sarah.smith@NSPCC.org.uk

Tel: 0756 2204886

EVERY CHILDHOOD IS WORTH FIGHTING FOR

Therapeutic Services for Victims of Sexual Violence and Assault

Kate Williams

FearFree

Special Domestic Abuse Courts: How Special were they in 2022?

An observational study by Soroptimists in England.

Why this project?

2.4 million adults experienced DA in 2022

1.7 million women and 699,000 men

Women aged 16-19 most likely victims

20% all children have lived with adult
perpetrating DA

All types –physical, emotional, sexual, honour-
based, stalking, neglect

2021 –Domestic Abuse Act intended

- Raise awareness understanding DA
- Improve effectiveness of CJS in providing protection for victims and bring perpetrators to account
- Strengthen support for victims by statutory agencies
- Create DA Commissioner to hold agencies and government to account
- Introduce new definitions of Domestic Abuse
- Define Children who see, hear or experience the effect of abuse as victims

What is Domestic Abuse?

An incident or pattern of incidents of controlling, coercive or threatening behaviour, violence or abuse by someone who is or has been an intimate partner or family member regardless of gender or sexuality.

How?

Controlling Behaviour

Coercion

Special Domestic Abuse Courts

- Set up in 2002
- Have lower rates of attrition and higher number successful convictions
- Safer outcomes for victims:

Key Components:

- strong MARAC, (Multi-Agency Risk Assessment Conference)
- safe facilities
- involvement of IDVAs (Independent Domestic Violence Advisors)

Methodology

Soroptimist volunteers recruited in local area:

2017 – Northumbria

2020 – Midlands

2020 – Wiltshire

2022 – England.

- Training – Police Superintendent from Midlands. All had to undergo training
- Obtain buy-in from local police and other decision makers and courts
- Attended court in pairs
- Used same form to collect data
- Local supervision in place

REPORTS

Quantitative Analysis

Northumbria Police

Cath Hanlon - Midland Police

Jess Rose, PhD student from Bournemouth
University

Structured Qualitative debrief.

Good practice

Recommendations

Key Findings

1.Lack of IDVAS

2.Frequent breaches of Domestic Violence Protection Orders, Non Molestation Orders

and high number of repeat offences (17.4%)

Sentences imposed for breaches most commonly extension of court order already in place

3.Insufficient facilities and underuse of special measures

entry/exits, poor quality screening, poor live link technology

4. Victim retractions and non-attendance

Significant challenge, particularly if involved case being dropped

5.Low charge rate for CCB

Referred to in small number of cases but clear feature in majority of cases observed, and brought as a charge in 15 or 626 cases where it was mentioned.

Results

IDVAS –Was an IDVA present in court during the case?

Yes 158 No 451 Not known 417

Although no IDVA the victim was aided by a member of the police safeguarding team,(5), police domestic violence champions(3) and child safeguarding officers(1)

Impact on Proceedings

None observed or no comment from observer 128

Magistrates aware 23

Acted as intermediary 7

Coercive and Controlling Behaviour(CCB)

CCB referred to in 16% of all cases (13.8% with guilty plea)

Finding align with recent research showing key opportunities to identify CCB are missed by officers and court professionals.

Why?

“course of conduct offence” rather than an “incident”- leading to difficulties in obtaining evidence, high rates of attrition and victim withdrawal.

Lack of understanding by magistrates

e.g. magistrate asked if stalking or harassment came under umbrella of DA

Judge asked why she didn't just leave if she was being abused.

These comments show poor understanding of complex dynamics of DA

Observed exemplary examples of concern for welfare of victims where officials “saw through the defence”

Recommendations

1. IDVAs

PCCs and criminal justice partners to work with specialist agencies to review the availability of IDVAs to ensure they are present in person or by video link at all SDAC hearings

2. IT

3 Quality, Effective Training on DA cases, particularly chair magistrates

4. Review format, function and services provided by SDAC

5. Monitoring and supervision of Domestic Violence Protection Orders with resources for breaches to be dealt with promptly

6. Review Victim Personal Statement.

7. Special Measures –review court facilities to ensure safety of victims and witnesses.

Reference

<https://sigbi.org/assets/Specialist-Domestic-Abuse-Courts-How-special-were-they-in-2022.pdf>



SWINDON

COMMUNITY SAFETY
PARTNERSHIP

Domestic Abuse Lived Experience Survey

Jo Smith

Domestic Abuse Project Officer

Survey Summary

We consulted from:

Mon 21st August 2023 - Mon 16th October 2023

Received 83 responses from those in Swindon who have experienced DA



SWINDON

COMMUNITY SAFETY
PARTNERSHIP

Demographic Data

- Between 25-54 years old - 64%
- Female including trans-female - 74.7%
- White British ethnic group - 89.5%
- Heterosexual - 91%
- 15.7% had a disability

We asked:

People who have experienced Domestic Abuse can call themselves or be referred to in different ways - Victims, Survivors, those with Lived Experience or sharing their Authentic Voice. Which do you prefer?

Respondents preferred...

Survivor – 39.3%

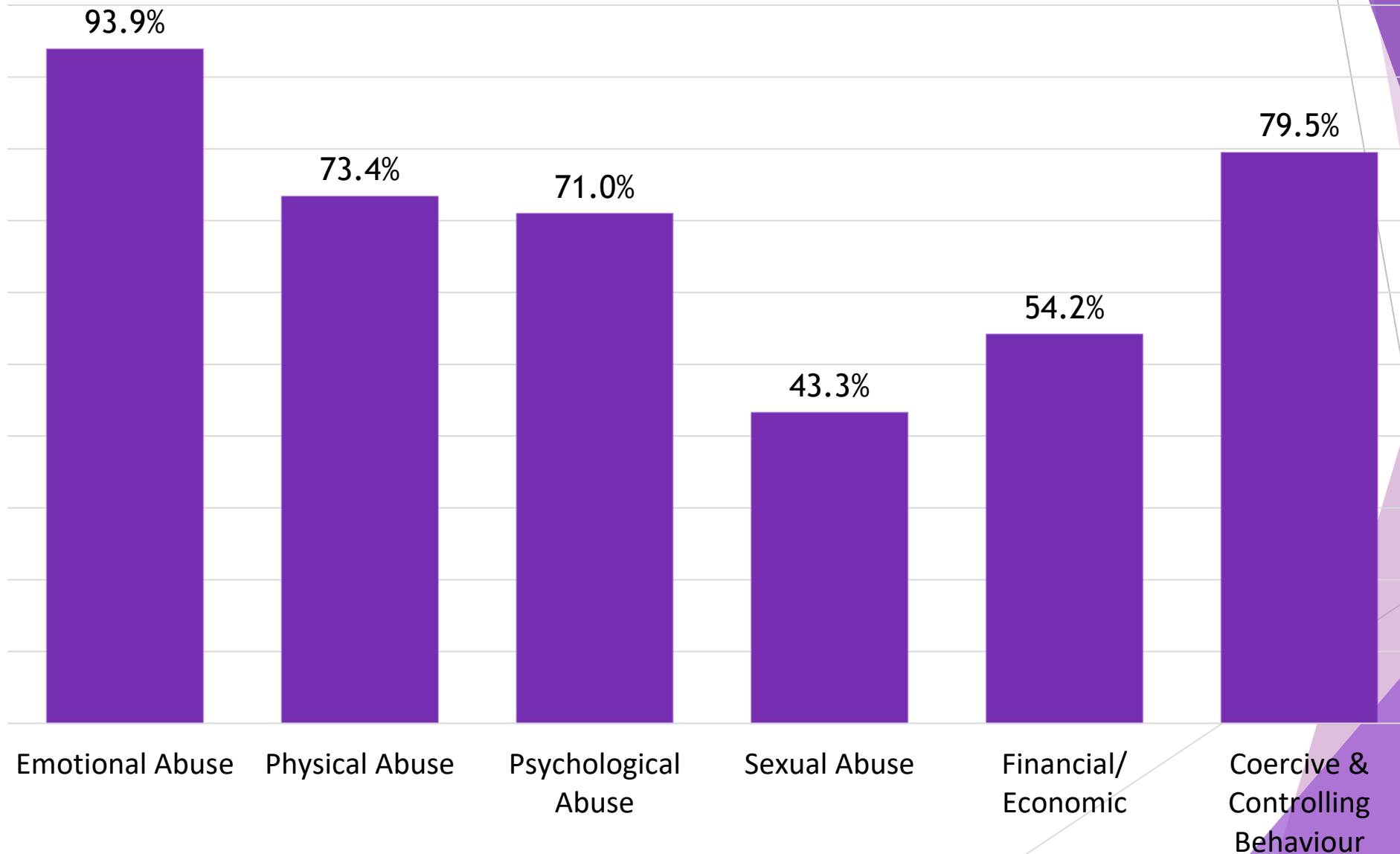
Those with Lived Experience – 32.1%



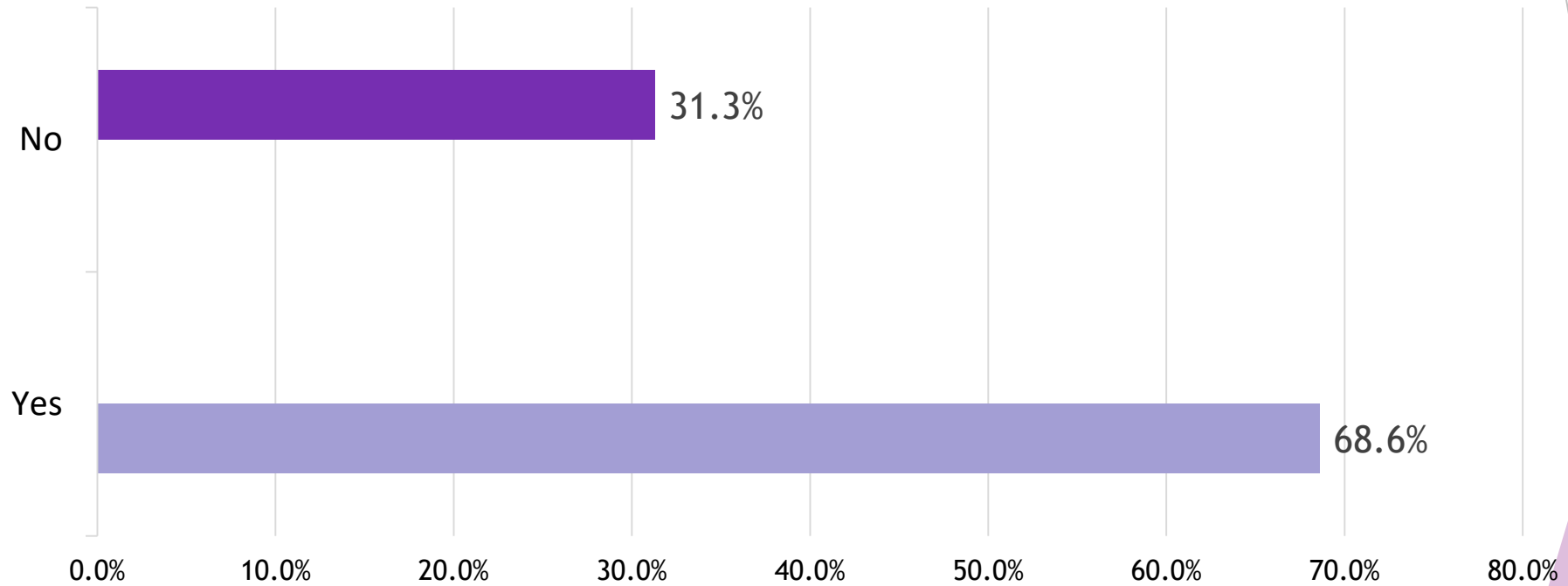
SWINDON

COMMUNITY SAFETY
PARTNERSHIP

What kind of Domestic Abuse did you experience?



Have you ever reported your abuse?



SWINDON

COMMUNITY SAFETY
PARTNERSHIP

Most
common
agencies
they
reported
to:



SWA

NHS (GP)



SWINDON

COMMUNITY SAFETY
PARTNERSHIP

Changes to Services

More
dedicated
staff and
training
24%

Increased
awareness of
DA
17%

Longer term
follow up
support
17%



SWINDON

COMMUNITY SAFETY
PARTNERSHIP

Safer ways to report

Awareness &
campaigns

23%

Developing
technology

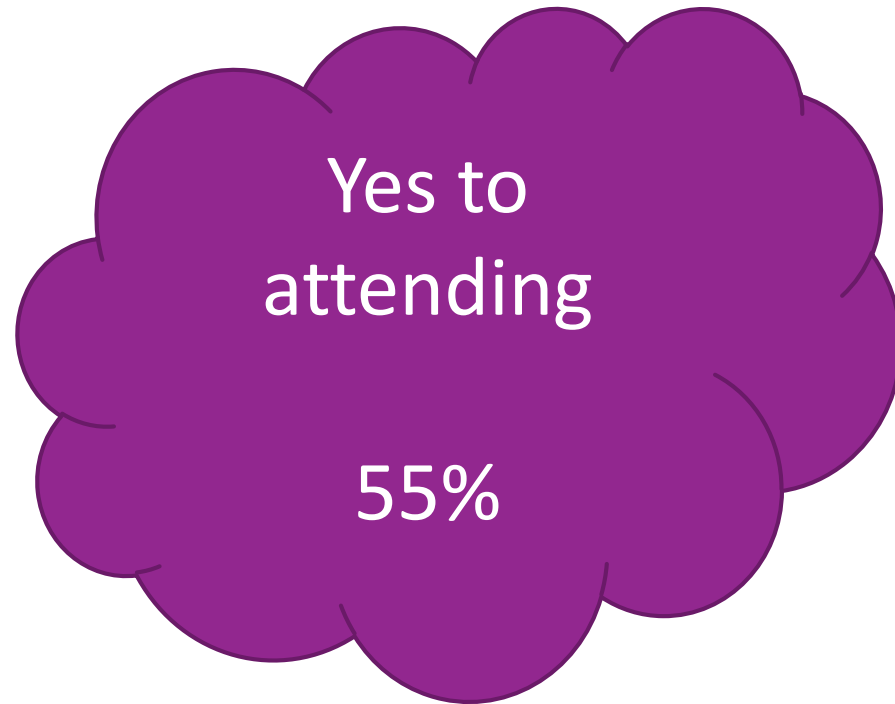
17%



SWINDON

COMMUNITY SAFETY
PARTNERSHIP

Domestic Abuse Consultation Group



3rd meeting will be in March – Contact Jo if you'd like to attend



SWINDON

COMMUNITY SAFETY
PARTNERSHIP

A large, bold, black opening quotation mark is positioned at the top left of the text area.

As a child impacted by DV, sexual abuse and the loss of our older sister's life to domestic abuse homicide. This group was a platform that I could use our lived experiences ensuring we play a part to create positive change in an area we felt was important to us. Giving us an opportunity to voice our truth and using our voices to empower change when often we are stuck in the trauma cycle myself

A large, bold, black closing quotation mark is positioned at the bottom right of the text area.



Any Questions?



SWINDON

COMMUNITY SAFETY
PARTNERSHIP



Swindon

Family Safeguarding

Juliana Tomegea and Marilyn Thompson

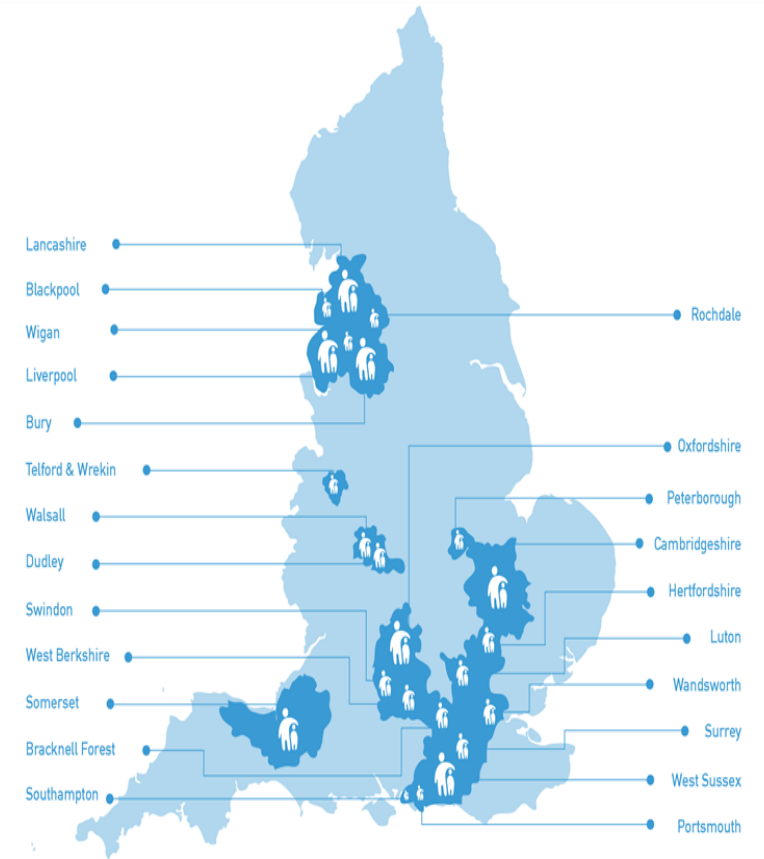
March 2024



SWINDON
BOROUGH COUNCIL

The Family Safeguarding Model

- Family Safeguarding Model was developed by Hertfordshire County Council as part of the social work innovation programme in 2015
- Swindon was successful in applying in 2019 and the model started its implementation in May 2022
- Approved funding by DfE Strengthening Families, Protecting Children and monitored by DfE
- Swindon is part of the Centre of Family Safeguarding Practice alongside 27 other local



Children, Families and Community Health



Family Safeguarding Implementation Swindon

Where are we

- 7 Family Safeguarding Teams (each team is managed by a team manager, has 5 social workers and family practitioners)
- 4 Domestic Abuse Practitioners (Victims)
- 4 Mental Health Practitioners and 2 Psychologists
- 4 Recovery Workers
- 4 Domestic Abuse Officers (Perpetrators) – not in post yet



The Multi-disciplinary Team

Research tells us that the parenting factors that create the most vulnerabilities, and therefore potential harm to children, are parental domestic abuse, substance misuse and/or mental ill-health, especially in families where all 3 factors co-exist together.

We work in multi-disciplinary teams with the full range of skills necessary to help and support the needs of the parents in any of these areas

Family Safeguarding https://youtu.be/66_PG9ZI-XI

Domestic Abuse Link https://youtu.be/xv_cPiyvP7I

Motivational Interviewing https://youtu.be/aY-nb3M_zfA

Swindon Webpage [About family safeguarding | Swindon Borough Council](#)

Family Safeguarding Domestic Abuse Adult Practitioner

- Domestic Abuse Practitioners – 4 Practitioners
- Referrals - Referral/Consultation with SW/Care plan
- 1-1 interventions - DASH; What is abuse; Self-esteem; effects on children; red flags; Cycle of abuse; Safety Planning;
- Safer Us Programme – 13 weeks (10 grp sessions & 3 individual sessions); Families on CIN/CP plans; peer support; relaxed atmosphere
- Signposting/support with legal options
- Case Study – Mother & Child, no recourse to public funds

Benefits of Family Safeguarding

- National evaluation indicates reduction in Child Protection and Court work along with improved school attendance.
- It also indicates reduced police call outs to domestic abuse, reduced A&E admissions for adults and reduced mental health crisis contacts
- Co-location with adult workers promotes whole family approach and better information sharing and collaborative working
- Holistic approach to the assessment of need and coordinated support to improve outcomes
- Motivational Interviewing - a unifying collaborative method of practice creating confidence in parents to enhance readiness for change.
- Research evaluation reports a reduction in social work stress and an increase in confidence in the social work role

Thank you

www.swindon.gov.uk



Bobby Van Trust

Sally Raubenheimer

No slides please refer to the website: [Bobby Van
\(wiltshirebobbyvan.org.uk\)](http://wiltshirebobbyvan.org.uk)

OPEN²CHANGE

HEALTHY RELATIONSHIP PROGRAMME



Our key focus with the perpetrator work is to keep victims and children safe and break the cycle of abuse.

Key objectives are to:

- Reduce the harm caused to victims and children
- Reduce the number of serial perpetrators of domestic abuse
- Reduce the number of repeat and new victims
- Intervene earlier to safeguard families living with high risk, high harm domestic abuse

Ready and willing to engage

All clients accessing the programme do so in a capacity whereby they are ready and willing to engage with the work. We are unable to have our programme written in to Child Protection Plans, or any pre proceedings/legal court order raised by Children's social care.

Programme of support

There is an intensive 6 week initial assessment process and all clients would need to engage with this initial process before being accepted on to the full programme.

The programme aims to address the following areas:

To complete support service users would need to complete 6 objectives:

- What is domestic abuse/Exploring abusive behaviours
 - Childhood trauma and its impact
 - Managing conflict and communication
 - Thoughts/feelings/behaviours
- Accountability/understanding/reflection
 - Sexual abuse and consent

Victims receive an integrated support service comprising of emotional support, and a side by side plan of work (if appropriate) to ensure their safety remains paramount.

Behaviour Change contract with perpetrator

5. Partner support:

5.1 I understand that my (ex) partner and others who may be considered at risk from my behaviour may be contacted and offered support. I agree not to do anything to prevent this from happening

5.2 I agree that if I begin a new relationship or resume a relationship I will inform staff immediately

5.3 I understand if a planned/un – planned or non-engagement occurs, this would be shared with my (ex) partner and others who may be considered at risk from my behaviour

Referral process

Referrals can be sent to o2c@swindonwomensaid.org

Referrals can be accepted by all professional agencies on our referral form, or clients can refer themselves on to the programme.

Referrals are allocated on a Mon/Weds/Fri and the workers aim to be in contact within 5 working days from point of allocation.

Referrers will be notified once the referral has be allocated.

ANY QUESTIONS?

o2c@swindonwomensaid.org



Information Share

Sandie Arrell-Stoneham

Please give us your feedback

Evaluation form link :

<https://forms.office.com/e/XFwtHV9GXs>



Swindon Safeguarding and Community Safety Partnership Resources

Please see our local resources:

- NFS [Non fatal strangulation - March 2023 - Swindon Safeguarding Partnership](#)
- Coercive control [Coercive control - Swindon Safeguarding Partnership](#)
- DASH MARAC [SSP practice brief - DASH risk identification checklist and MARAC - Swindon Safeguarding Partnership](#)
- DA tech webinar [Video archive - Swindon Safeguarding Partnership](#)
- FGM webinar [Video archive - Swindon Safeguarding Partnership](#)
- Serious and Organised Crime [Video archive - Swindon Safeguarding Partnership](#)
- DA webpage [Domestic abuse - Swindon Safeguarding Partnership](#)
- [Exploitation of adults - Swindon Safeguarding Partnership](#)
- [Hate crime - Swindon Safeguarding Partnership](#)
- [Domestic Homicide Review \(DHR\) - Swindon Safeguarding Partnership](#)