



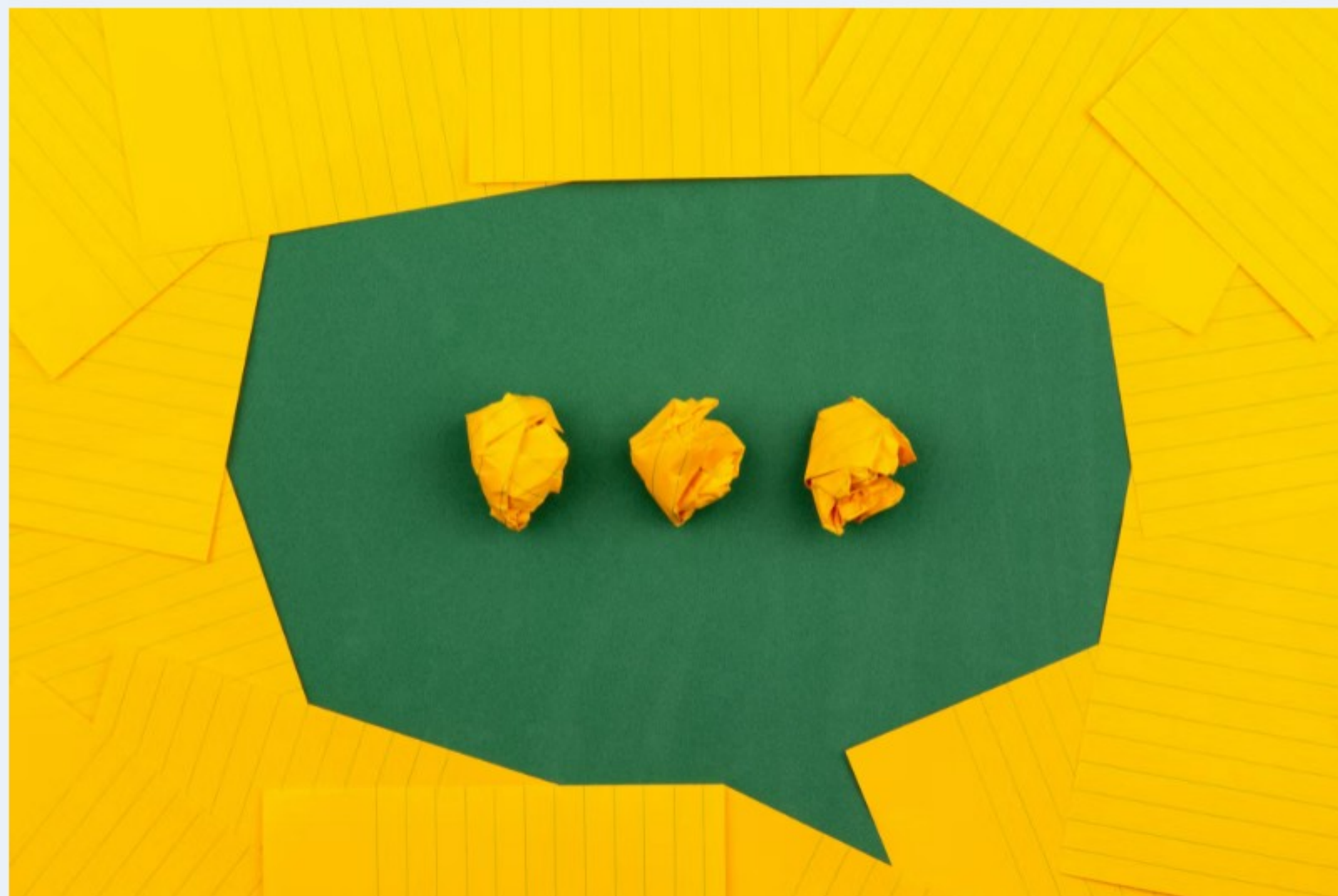
Swindon Safeguarding Partnership Practitioners Forum

Working with Neglect





Welcome to the Swindon Safeguarding Partnership Practitioners Forum



What is the purpose of the Practitioner Forums?

We want to be able to meet and talk regularly to frontline practitioners to gain your views on what it feels like to work across Swindon.

We want to hear about practice, what is good, what is not so good, what support is available or what support you feel might be needed. We would also like you to contribute to, comment on and test out new developments and improvements.

We would also like practitioners to share good practice and provide the voice of children, families and adults with care and support needs in Swindon to the Safeguarding Partnership.

The focus of the forum today will be Working with Child Neglect





What do you think is the purpose of the Safeguarding Partnership?

0 responses





What is the Safeguarding Partnership?

Swindon Safeguarding Partnership came into effect in July 2019 to oversee the Multi-Agency Safeguarding Arrangements for children and adults at risk set out in Working Together 2018 and the Care Act.

The multi-agency arrangements have since been revised to ensure that the Partnership is compliant with the updated Working Together to Safeguarding Children 2023 guidance.

Swindon Safeguarding Partnership comprises of the named statutory safeguarding partners and those agencies and organisations who have varying degrees of contact with children and/or adults with care and support needs and those who care for them throughout Swindon.



The Safeguarding Partnership arrangements are led by the three statutory partners:



Lead Safeguarding Partners

SBC Local Authority, Chief Executive, Samantha Mowbray

Wiltshire Police, Chief Constable Catherine Roper

BSWICB Chief Executive Officer, Sue Harriman

The Lead Safeguarding Partners have delegated responsibilities to the Swindon Safeguarding Partnership Executive Group

Delegated Safeguarding Partners

BSWICB Chief Nurse, Gill May – Partnership Chair

SBC Local Authority Director of Corporate Childrens Services,

Lisa Arthey

SBC Local Authority Corporate Director Integrated Adult Social

Care (DASS), Clare Deards

Wiltshire Police, Assistant Chief Constable, Mark Cooper

Additional Safeguarding Executive

Education Representative, Jackie Fieldwick, CEO Brunel

Academies Trust





What is the purpose of the Safeguarding Partnership?

- Deliver our shared responsibility for the safeguarding of children, young people and adults with care and support needs in Swindon.
- Provide effective and informed leadership to the local safeguarding system, evidencing that risks associated with multi-agency safeguarding arrangements are being actively managed.
- Promote positive working relationships with each other and children, adults, their unpaid carers and families. Creating a positive culture for learning not blaming.





What is the purpose of the Safeguarding Partnership?

- To actively engage with children, families, and adults with care and support needs and their unpaid carers to influence and improve safeguarding practices and service delivery across the Partnership.
- To undertake Rapid Reviews, Child Safeguarding Practice Reviews (CSPR), Safeguarding Adult Reviews (SARs) and multi-agency audits.
- Identify and act on learning from the above and provide a learning and development offer to include safeguarding training.
- To develop and update multi-agency policies and procedures.



We believe that effective safeguarding is founded on practitioners developing lasting and trusting relationships with the children and adults they work with as well as each other.





Working with Neglect

Child neglect has been identified as a strategic priority for the Swindon Safeguarding Partnership and it has been highlighted as a theme in local child safeguarding practice review Alan & Bella & Ben.

As a result, the partnership has set an aim of working together with partners to minimise the negative impact of neglect on children and young people in Swindon; and to enable all professionals to confidently identify, assess and respond to neglect.

Neglect can have significant, long lasting and pervasive consequences, which can affect all aspects of a child's development including physical development, educational achievement and emotional wellbeing. It is the most common type of abuse experienced by children and young people in England.



What could be an early indicator of Neglect?



What could be an early indicator of neglect in a child under 2 years old?



What could be an early indicator of neglect in a child over 14 years old?





How confident are you in identifying the early indicators of neglect?

0

Very Confident

0

Confident

0

Not Very Confident





What works wells when working with children who are being neglected?

Do you have any good practice examples
that you could share?





What are the challenges when working with children who are being neglected?

Have you experienced any challenges that you can share?





**Is there any
additional support
that you might need?**





Are you aware of the Safeguarding Partnership Neglect screening tool and Neglect toolkit?

0
Yes

0
No





Thank you for your participation today

Your feedback on the forum today would be appreciated. Please could we ask you to complete a short questionnaire. Link is in the chat.

