



Swindon Safeguarding Partnership

Multi-agency Safeguarding
Arrangements for Children and Adults
at Risk
2023-24

Contents

1. Introduction
2. Purpose
3. Membership
4. Independent Scrutiny
5. Reporting
6. Dispute Resolution
7. Funding and Resourcing
8. Partnership Structure Chart
9. Partnership Delivery Groups

1. Introduction

This document sets out how the safeguarding partners in Swindon coordinate their safeguarding services and how they will work together with relevant organisations and agencies to safeguard and promote the welfare of children and adults at risk with regard to local need.

Children

The Children and Social Work Act 2017 and its accompanying guidance [Working Together to Safeguard Children 2018](#) place a shared and equal duty on the statutory safeguarding partners to make arrangements to work together to safeguard and promote the welfare of all children in a local area.

Adults

The [Care Act 2014](#) requires that every local authority must set up a Safeguarding Adults Board (SAB), whose main objective is to assure itself that local safeguarding arrangements and partners act to help and protect adults in its area who meet the criteria for safeguarding. The local authority lead for the Safeguarding Adults Board in Swindon is the Director of Adult Services.

Safeguarding Partners

As defined in the Children Act 2004 (as amended by the Children and Social Work 2017) and the Care Act 2014, the lead representatives of the safeguarding partners are:

- The Chief Executive of the local authority
- The Accountable Officer for the Integrated Care Board for an area, any part of which falls within the local authority area
- The chief officer of police for an area, any part of which falls within the local authority area.

In Swindon, the lead representatives have delegated their responsibilities for the safeguarding arrangements to:

- Swindon Borough Council – Lisa Arthey, Corporate Director Childrens Services
- Swindon Borough Council – Alison Barker, Corporate Director Adults, Health and Housing
- BaNES, SWINDON and Wiltshire Integrated Care Board – Chief Nurse Officer
- Wiltshire Police - Deborah Smith, Assistant Chief Constable, Crime, Justice and Vulnerability

The safeguarding partners have equal and joint responsibility for local safeguarding arrangements, which is underpinned by equitable and proportionate funding including through any contributions from relevant agencies. The delegated representatives have the responsibility and authority for ensuring full participation with the safeguarding arrangements. Although the lead representatives have delegated their responsibilities to those named above, they remain accountable for any action or decisions taken on behalf of their respective agency. Decisions involving policy, resourcing and commissioning will include full participation by Cabinet Members and the Police and Crime Commissioner (PCC).

The safeguarding partners have drawn up an agreed Memorandum of Understanding that sets out how they will work together to ensure the effectiveness of their arrangements.

Both the Memorandum of Understanding and the arrangements set out in this document will be reviewed by the Safeguarding Executive at the end of 2023.

The area covered by the arrangements is defined by the Swindon Borough Council local authority boundary. Partners to these arrangements may have responsibility for services outside this area either due to their organisational boundaries overlapping other local authority areas or because they have responsibilities for children or adults at risk living in another area. Some partners may also need to work to another area's arrangements, for example during a case review commissioned by another area, and where this is the case the Safeguarding Partnership will help facilitate communication with other areas and engagement by partners.

2. Purpose

The safeguarding partners in Swindon are committed to a partnership model that focuses on continuous learning and improvement with a clear line of sight on frontline safeguarding practice. The partners will promote a shared commitment to work together to improve outcomes for children and adults at risk.

The Swindon Safeguarding Partnership will support, enable and challenge each other to work together to:

- Provide effective and informed leadership to the local safeguarding system;
- Deliver their shared responsibility for the safeguarding of children, young people and adults at risk in the borough;
- Promote positive working relationships with each other and children, adults and families;
- Identify and act on learning, and
- Provide assurance to the Swindon community

The Swindon Safeguarding Partnership believes that effective safeguarding is founded on practitioners developing lasting and trusting relationships with the children and adults they work with as well as each other. The Partnership will look beyond organisational constraints and boundaries to build a culture which improves outcomes for all. The Partnership has agreed a behaviours framework that promotes and delivers: accountability, openness, trust, innovation, commitment, respectfulness, curiosity and collaboration.

3. Swindon Safeguarding Partnership – Membership

In line with both Working Together 2018 and the Care Act 2014, the Swindon Safeguarding Partnership will include as members all organisations, agencies and individuals that will enable it to be effective in safeguarding of children and adults.

The Swindon Safeguarding Partnership will comprise of the named statutory safeguarding partners and those agencies and organisations listed below, each of whom has been chosen because they have varying degrees of contact with children and/or adults at risk and those who care for them:

- The Armed Forces
- Avon & Wiltshire Mental Health Partnership NHS Trust
- British Transport Police
- Care Quality Commission (CQC)
- Charitable and Voluntary Organisations; including faith groups
- Childminders
- Children and Family Court Advisory and Support Service
- Banes Swindon Wiltshire Integrated Care Board (BSW ICB)
- Dentists
- Dorset & Wiltshire Fire & Rescue Authority
- Education Providers including Early Years and childcare settings
- General Practitioners and other relevant Primary Care Professionals
- Great Western Hospital NHS Foundation Trust
- Healthwatch Swindon
- Housing Providers
- Independent Fostering Agencies
- National Health Service England
- NSPCC
- Opticians
- Oxford Health NHS Foundation Trust
- Probation - The National Probation Service and the Community Rehabilitation Company
- Pharmacists
- Residential Care Homes & Care Providers (children & adults)
- Swindon Borough Council Services
- The Secure Estate (Prisons, Secure Training Centres etc.)
- South West Ambulance Service Foundation Trust
- Swindon Advocacy Movement
- UK Visa, Immigration, Enforcement and Border Force
- Wiltshire & Swindon Coroner's Office
- Youth Justice Service
- Where appropriate, other services commissioned by any of the above

Representatives should be able to promote the effectiveness of the Partnership through their responsibility and accountability for the services their agencies deliver to children & adults at risk, and through their ability to influence the effectiveness of their agencies contribution to multi-agency safeguarding.

The voice of children and adults at risk is central to the work of the Partnership and their involvement in the development of services and multi-agency responses to their needs will

be developed through the Partnerships Engagement Subgroup. The Safeguarding Partnership Strategic Executive will review the membership of the Partnership annually.

4. Independent Scrutiny

“The role of independent scrutiny is critical to provide assurance in judging the effectiveness of services to protect children.

Independent scrutiny can also assist when there is disagreement between the leaders responsible for protecting children in the agencies involved in multi-agency arrangements.

It will be a local decision how best to implement a robust system of independent scrutiny. Safeguarding Partners should involve a person or persons who are independent, for example by virtue of being from outside the local area and/or having no prior involvement with local agencies.”

Working Together 2018

Swindon Safeguarding Partnership recognises the benefits of rigorous and independent scrutiny of its safeguarding arrangements and believes that the effectiveness of those arrangements can best be measured through the analysis and challenge of performance information, the impact of quality assurance activity on outcomes for children and adults at risk, and its arrangements for and response to Child Safeguarding Practice Reviews and Safeguarding Adult Reviews.

The Partnership will therefore commission Independent Scrutineers to scrutinise specific areas of the Partnership linked to the current priorities and the Partnership’s core safeguarding arrangements. This will provide help to evidence of the effectiveness these arrangements. Independent Scrutiny will form part of the quality assurance work being undertaken across the Partnership.

5. Reporting

The Swindon Safeguarding Partnership will produce an independently scrutinised Annual Report which sets out what the Partnership has done and how effective its multi-agency safeguarding arrangements have been in practice. It will include actions relating to safeguarding and domestic homicide reviews and what the safeguarding partners and others have done as a result. In addition, the report will include:

- Evidence of the impact of the work of the safeguarding partners and relevant agencies, including training, on outcomes for children and adults at risk.
- an analysis of any areas where there has been little or no evidence of progress on agreed priorities
- a record of decisions and actions taken by the partners in the report’s period (or planned to be taken) to implement the recommendations of any local and national safeguarding and/or domestic homicide reviews, including any resulting improvements
- ways in which the partners have sought and utilised feedback from service users to inform their work and influence service provision.

The report will be published on the Partnership’s website and distributed across the range of agencies that make up the Partnership. In line with legislation a copy of the report will also be sent to the Child Safeguarding Practice Review Panel and the What Works Centre for Children’s Social Care. The Partnership will also share the report with equivalent bodies for Health and the Police, including the Health and Wellbeing board.

6. Dispute Resolution

Safeguarding partners and relevant agencies must act in accordance with the arrangements for their area and will be expected to work together to resolve any disputes locally. Public bodies that fail to comply with their obligations under law are held to account through a variety of regulatory and inspection activity. In extremis, any noncompliance will be referred to the Secretary of State.

Working Together 2018

The Swindon Safeguarding Partnership will expect and support organisations and agencies to hold one another to account and to challenge appropriately when concerns or disputes relating to the effectiveness of the multi-agency safeguarding arrangements arise.

The Partnership will maintain a risk register to document organisational and strategic issues that might impact on the Partnership's ability to meet its statutory obligations. The Risk Register will be reviewed by the Partnership's Executive and a summary of the risks and mitigating actions as well as the impact of challenge will be included in the annual report.

7. Funding and Resourcing

The three safeguarding partners may make payments towards expenditure incurred in conjunction with local arrangements for safeguarding and promoting welfare of children locally.

The safeguarding partners should agree the level of funding secured from each partner, which should be equitable and proportionate, and with each relevant agency, to support the local arrangements to safeguard and promote the welfare of children in their area. The funding should be transparent to children and families in the area and sufficient to cover all elements of the arrangements.

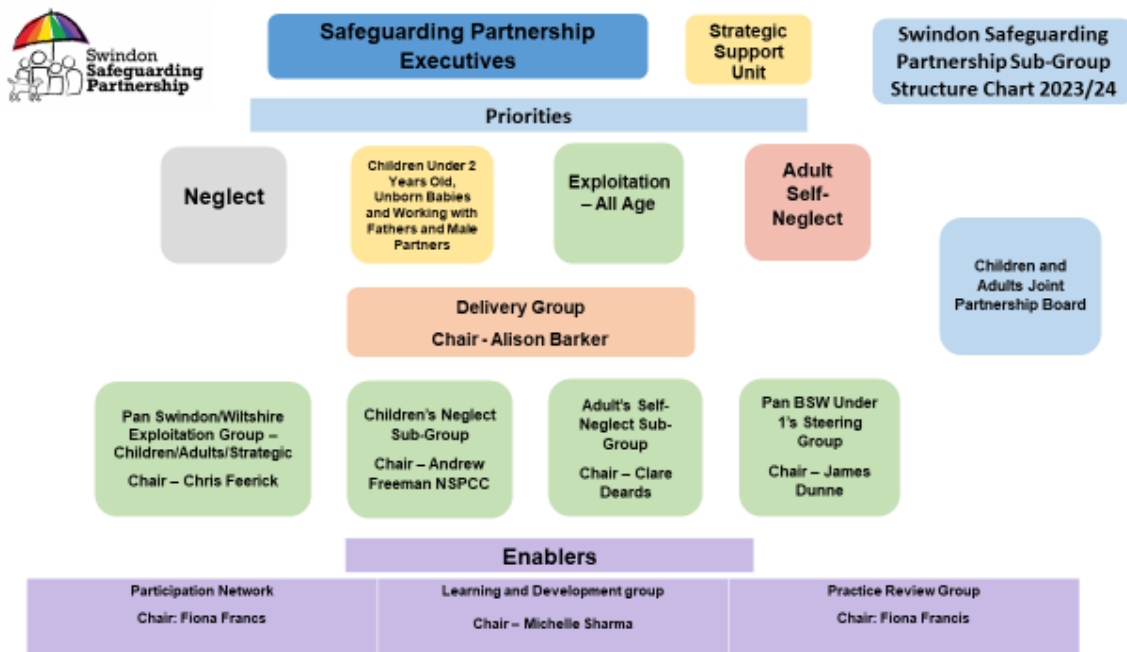
Working Together 2018

Section 14 of the Care Act 2014 states that Members of a SAB are expected to consider what assistance they can provide in supporting the Board in its work. This might be through payment to the local authority or to a joint fund established by the local authority to provide, for example, secretariat functions for the Board. Members might also support the work of the SAB by providing administrative help, premises for meetings or holding training sessions. It is in all core partners' interests to have an effective SAB that is resourced adequately to carry out its functions.

The funding arrangements for the Swindon Safeguarding Partnership and contributions will be set out in a Memorandum of Understanding signed by the lead representatives and those with delegated responsibility for the arrangements as set out above. The Safeguarding Partners will provide through financial or in-kind contributions the resources required to deliver on their ambition for effective multi-agency safeguarding arrangements as set out in this document and the Partnership's annual business plan.

The Safeguarding Partners are supported by a Strategic Support Unit, which comprises of a Strategic Manager for Safeguarding, Strategic lead for adults, Learning and Development Lead and Administrative Support staff. The team will be employed and line managed by Swindon Borough Council on behalf of the Safeguarding Partners.

8. Structure



9. Safeguarding Partnership Delivery Groups

Swindon Safeguarding Executive

Meeting **8 times** per year the Executive comprises of:

- The Director of Childrens Services, Swindon Borough Council (SBC)
- Chief Nurse, Swindon Integrated Care Board (ICB)
- Assistant Chief Constable, Wiltshire Police
- The Director of Adult, Health and Housing, Swindon Borough Council (SBC)

The following will receive papers relating to the meetings of the Safeguarding Executive and will be invited to attend when there are policy, resourcing and commissioning decisions to be addressed:

- Police & Crime Commissioner for Swindon & Wiltshire
- Swindon Borough Council Cabinet Member for Adults
- Swindon Borough Council Cabinet Member for Children
- Chief Executive of Swindon Borough Council
- Chief Executive Officer for BSW Integrated Care Board
- Chief Constable of Wiltshire Police

The core role of the Executive is to:

- ensure all elements of the Partnership are working effectively;
- To receive and respond to recommendations from Independent Scrutiny and any other sources of scrutiny and challenge.

- to set the budget and agree expenditure to agree the Partnership's Business Plan and its Annual Report;
- To make decisions as to the commissioning of Child Safeguarding Practice Reviews (CSPR) and Safeguarding Adult Reviews (SARS).
- to ensure there is a response to new and emerging safeguarding issues;
- to understand the performance and impact of safeguarding services; and,
- ensure the views and experiences of children and adults at risk inform the work of the Partnership

The Chair of the Safeguarding Partnership for 2023-24 is Gill May, Chief Nurse, ICB

Joint Children and Adults Partnership Meeting

Meeting **four times** per year this joint group will:

- Focus on performance and practice related to the Partnership's priorities;
- Seek, listen and respond to the voice of children and adults at risk
- Contribute to forward Business Planning; and,
- Contribute to and receive the Annual Report.

Delivery Group

Meeting **six times** per year the chairs group will support the Executive by ensuring that:

- the Partnership's business plan is on track;
- each sub group is working effectively;
- agencies are properly represented across them all; and,
- where the work of one sub group can add value to that of another it is properly identified; and,
- that between them the priorities of the Safeguarding Partnership are being delivered.

Learning and Development Group

Meeting **four times** per year, Learning and Development Group is responsible the delivery of an effective multi-agency learning and development programme that has a demonstrable impact on outcomes for children and adults at risk. The group will:

- Develop a multi-agency training offer that meets the needs of those working to safeguard and protect children and adults at risk;
- Oversee the commissioning of training providers and with the Strategic Support Unit, review the quality and effectiveness of the training provided;
- Provide the Safeguarding Executive with assurance as to the effectiveness of the multi-agency training offer and its impact on frontline practice; and,
- Ensure that safeguarding training delivered within partner agencies is compatible with national and local requirements.
- Link with the Partnership sub-groups to scope any learning and development identified from recommendations from case reviews and multi-agency case audits.

The majority of training is to be commissioned through external providers and the Strategic Support Unit will manage the procurement, commissioning and contract management

processes. In addition to this core provision, some of the multi-agency training will be provided by partner agencies and this too will be managed by the Strategic Support Unit. The Strategic Support Unit will provide quarterly reports to the Learning and Development Group to include quantitative and qualitative information as to the effectiveness of the training offer. The Strategic Support Unit will lead on the evaluation and quality assurance of the training offer. This will involve engagement with participants and their managers to evaluate the impact of training on frontline practice and a programme of course observations carried out by members of the Partnership to quality assure the training providers.

Practice Review Group

Meeting **8 times** per year the Practice Review Group will consist of senior officers from different agencies such as health, children social care, adult social care, community safety, education and police and will receive referrals on cases that may meet the criteria for a statutory review such as a Child Safeguarding Practice Review and Safeguarding Adults Review.

The group will also receive and consider referrals for cases that provide additional learning where those cases do not meet the criteria for a statutory review. The group will discuss the referrals and use statutory criteria to make recommendations to the Safeguarding Executive and any relevant statutory bodies such as the National Panel on Child Safeguarding Practice Reviews. Where safeguarding practice reviews are commissioned the Practice Review Group will oversee the review process.

Reviews will be commissioned in such a way as to ensure that the reports can be published in full. The reports will be published on the Safeguarding Partnership website and will remain publicly available for at least one year.

Any learning identified will be shared with the Learning and Development group who will consider how best to disseminate the learning identified through case reviews and will advise the Safeguarding Executive on how the learning should be embedded and tested through the work plans of sub-groups.

The Practice Review Group and the Safeguarding Executive will adhere to statutory guidance as set out in Chapter 4 of Working Together 2018 and Section 44 of the Care Act 2014.

Practitioners Forum

This group will meet **4 times** per year. The purpose of the group is to network with all professionals in Swindon who are involved in the engagement and participation of children, young people, vulnerable families and adults with care and support needs. This will provide assurance that we understand what already exists within the Swindon Borough Council area. The group will facilitate the sharing of information to help build a picture of what children, young people, vulnerable families and adults with care and support needs in Swindon are telling us.

The group will consult with children, young people, vulnerable families and adults with care and support needs through already existing consultation groups/voice groups and surveys, share good practice and create new opportunities while ensuring that the voice of children and adults with care and support needs are heard and able to influence service design and delivery. The work of the group will link to the current Partnership priorities.

Partnership Sub-Groups

These groups will focus on the Partnership's priorities and identified emerging risks. They will consist of representatives from organisations that play a key role in delivering the identified improvements in services for children and families and adults at risk will meet as frequently as required. Where appropriate they will be time limited with clear terms of reference and SMART action plans. For as long as the group is needed the sub-group Chair would attend meetings of the Delivery Group.