

Follow us on Twitter



Access training on Eventbrite



Follow us on LinkedIn



For more info access our website



✉ [safeguardingpartnership@swindon.gov.uk](mailto:safeguardingpartnership@swindon.gov.uk)

📍 [safeguardingpartnership.swindon.gov.uk](http://safeguardingpartnership.swindon.gov.uk)

☎ 01793 463803

Although we are still not able to put on any face-to-face training we are expanding the range of topics for which we have on-line learning available through our website: [safeguardingpartnership.swindon.gov.uk/training](http://safeguardingpartnership.swindon.gov.uk/training)

### SSP website continues to be under development



You may notice that the layout and navigation of the [website](http://safeguardingpartnership.swindon.gov.uk) has now changed so please be aware that the hyperlinks may have changed if you have previously saved them. The next phase will involve updating the content before the redesign is implemented. Thank you for your on-going cooperation and understanding as we continue to improve the website and your user experience.

### SSP Training



### [Virtual Classroom](#)

#### **Virtual courses new dates announced: May/June 2021:**

**Managing Allegations:** 19<sup>th</sup> May 2021 – still a couple of places  
**MASH/ACP Open Morning:** 1<sup>st</sup> July 2021 – still a couple of places  
**Threshold Framework - Right Help at the Right Time:** 9<sup>th</sup> June 2021 – several spaces.  
**Keeping Safe Online and Cyber Exploitation:** 26<sup>th</sup> May 2021 - places available.  
**Update on training offer 2021-22.** Thank you for your patience we hope to have some new modules/courses published shortly. Please continue to check the SSP website for course availability.  
**Bookings:** All courses **MUST be booked** through the [Virtual Courses & E-Learning](#) page of the SSP website. If a booking is received for a course that is **marked as FULL** on this page, then the applicant is unlikely to be allocated a place and any payment made may not be refunded.  
**Cancellation policy:** If you are subsequently unable to attend the training, you have booked (free or paid courses) it is imperative that you cancel your booking **as soon as possible or within 10 working days**. If you fail to do this within the timescales you are likely to incur charges.  
**Please note:** it has been necessary for a small price increase paid for courses are now £80. If you require a receipt please ensure your email details are provided on the payment page.

**The Building A Resilient Swindon learning programme launch event:  
 90 minute conference style webinar on Monday 17th May at 11.00am**

This is a rearranged session where KCA's founder, Kate Cairns will deliver a keynote presentation introducing Five to Thrive, Mending Hurts and Creating Connections as three related models that support practitioners to promote secure attachment, promote recovery from trauma and build resilience. This launch session is open to managers, leaders, strategists and anyone involved in delivering services in Swindon who would help identify champions. This includes you, if you yourself want to be a champion. Both this launch session and the champions learning programme is fully



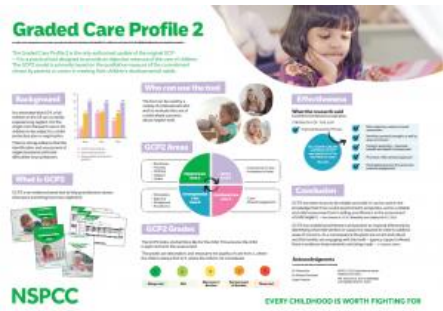
funded. For further information and to register for this event please [click here](#).

### New 7 Minute Brief – Adult Safeguarding - Self Neglect



Self-neglect has been a theme in national and local Safeguarding Adult Reviews. The reasons can be complex and may impact on a person’s health, wellbeing or living conditions and may have a negative impact on others. Please familiarise yourself with the content of this briefing. There is an expectation that agencies/professionals will share these resources widely and use them in team meetings, as part of group/individual supervision and for personal professional development. To access them please go to the [SSP training page](#).

### Graded Care Profile (GCP2) Assessment Tool



**What is GCP2?** GCP2 helps practitioners measure the quality of care a child is receiving and so identify neglect and spot anything that is putting that child at risk of harm. **You need to have successfully completed the GCP2 training to use the assessment tool.** To date approximately 80 professionals from a range of agencies (such as schools/education, police, children’s services) have been trained to use GCP2.

**What are the circumstances for using the GCP2 in Swindon?** GCP2 should be used where there is possible/potential neglect across the multi-agency partnership. **This includes to support referrals to other agencies. For example when making a referral about possible/potential neglect to Children’s Social Care at level 3 (of the threshold document) or to Early Help at level 2 (threshold document).**

**As far as possible, a completed GCP2 should accompany the referral or be underway.** Where immediate referral/action is required, it may not have been possible to undertake the GCP2 and not having a GCP2 should not preclude a referral being made/accepted. Where an urgent referral is made without a GCP2, the referrer will undertake or contribute to the GCP2 following referral.

Other circumstances may include where a child/young person is placed on a Child Protection Plan under the category of neglect or is placed on a Child Protection Plan under a different category but where neglect is known/suspected.

Some professionals, such as schools, acute health and police may not be in a position to complete a full GCP2 assessment but they may be in position to complete one or more of the 4 areas of care. **In circumstances where no GCP2 assessment can be completed, a [Neglect screening tool](#) is available to assist in evidencing neglect concerns.** Further clarification regarding the GCP2 principles for use are detailed within the [Principles and FAQ’s](#)

The way in which we understand and define neglect can determine how we respond to it. For further information and guidance including the revised [SSP Neglect Framework and Practice Guidance](#) can be accessed via the [Neglect and GCP2 webpage](#).

# Virtual Youth and Early Intervention Forums

**Monday 24<sup>th</sup> May to  
Thursday 27<sup>th</sup> May 2021**  
**Bookings now open!**



Further to the entry on [issue 17](#). The forums will provide professionals with an opportunity to better understand the local services available and the support offered. There is a different theme for each day (detailed below) with presentations by guest speakers and signposting to local information and resources. Please note there have been some changes to the programme. For further information and to book a place please click on the respective link within the table below. Bookings will close at midday on 21<sup>st</sup> May 2021. An email will be sent on the afternoon of 21<sup>st</sup> May with further information and the MS Teams link to access the session.

<p><b>Monday 24<sup>th</sup> May</b> <b>0950 – 1300</b></p> <p><b>Adverse childhood experiences and trauma.</b></p> <p><a href="#">Click here to book a place.</a></p>	<p><u>Presentations from:</u></p> <ul style="list-style-type: none"> <li>i) Professor Mark Bellis (Director of Policy, Research and International Development, Public Health Wales).</li> <li>ii) Film screening of Resilience.</li> <li>iii) Kate Cairns Associates.</li> </ul>
<p><b>Tuesday 25<sup>th</sup> May</b> <b>1000-1200</b></p> <p><b>Youth Violence and the Local Drug Profile.</b></p> <p><a href="#">Click here to book a place.</a></p>	<p><u>Presentations from:</u></p> <ul style="list-style-type: none"> <li>i) Emily Van de Ley (Crimestoppers/Fearless).</li> <li>ii) Jackie Thomas (The Children’s Society).</li> <li>iii) Detective Inspector Paul Franklin (Wiltshire Police).</li> <li>iv) Jeannette Chipping (Exploitation and Missing Manager SBC).</li> <li>v) Detective Inspector Mark Kent (Head of Wiltshire Police Exploitation Team).</li> <li>vi) A child’s account.</li> </ul>
<p><b>Wednesday 26<sup>th</sup> May</b> <b>1000-1130</b></p> <p><b>Early Help and Youth Diversion.</b></p> <p><a href="#">Click here to book a place.</a></p>	<p><u>Presentations from:</u></p> <ul style="list-style-type: none"> <li>i) Sonja Leith (Wiltshire Police – Head of Improvement and Change).</li> <li>ii) Jane Griffiths (Head of Partnerships, Early Years, Early Help, and SEND Support).</li> <li>iii) A child’s account of how sport intervention helped turn their life around.</li> </ul>
<p><b>Thursday 27<sup>th</sup> May</b> <b>1000-1200</b></p> <p><b>Mental Health</b></p> <p><a href="#">Click here to book a place.</a></p>	<p><u>Presentations from:</u></p> <ul style="list-style-type: none"> <li>i) Suzie Franklin (Senior Consultant, Trauma Informed Schools).</li> <li>ii) Mental Health: In our own words.</li> </ul>

## National County Lines Coordination Centre

### Useful Resources



Below are some useful resources for professionals in relation to County Lines.

[NCLCC - County Lines Awareness Video](#) - 10 minute video which discusses the County Lines methodology and how it is impacting children and vulnerable adults, safeguarding partners, law enforcement and society.

[NCLCC - National Referral Mechanism - Awareness Video](#) – 6 minute video which focuses on the National Referral Mechanism (NRM) including the process, when to apply and how decisions are made. The NRM is a framework for identifying and referring potential victims of modern slavery and ensuring they receive the appropriate support.

[NCLCC Section 45 Defence awareness video](#) - A 6.30 minute video which provides and insight and awareness around the Sec45 defence often linked to County Lines.

## Sharing information/intelligence with Wiltshire Police



The new link for sharing information/intelligence with Wiltshire Police is now live. Please note: this form is not monitored 24/7 and is not for reporting crime. It should not be used to replace statutory safeguarding procedures. To access click on the link below:

<https://www.wiltshire.police.uk/partners/partner-services/sharing-information/partner-agency-information-sharing/>

Once information has been submitted you will now receive a confirmation pdf.

## Child Protection During the Perinatal Period: Assessment and Practice

20<sup>th</sup> May 2021 at 1330  
Free Event



This is an online seminar focusses on child protection in the period from conception to birth. This is a significant issue in view of widespread evidence concerning the high (and apparently growing) number of infants removed from birth parents within the first few weeks of life, in several different countries. The seminar will explore the following issues:

- Community-level assessment and intervention
- Pre-birth assessment: timeframes and processes
- Supporting pregnant and newly-delivered women whose infants are at risk of harm
- Effective interventions in preventing repeat removals
- Guidelines for humane and sensitive practice when infant removal is necessary

For further information and to book a place [click here](#)

## Analysis of Safeguarding Adults Reviews targeted briefings



The National Analysis briefings can be [accessed here](#).

These targeted briefings have been developed to enable easier access to the wealth of information and guidance. These extract findings from the report most relevant to the particular audience and identify key messages for taking the learning and improvement work forward.

These have been developed for:

- [practitioners](#),
- [elected members](#),
- [senior leaders](#),
- [Safeguarding Adults Board \(SAB\) chairs and business managers](#),
- [Safeguarding Adults Review authors](#)
- [individuals and their families](#).

## Reminder of Services Offered



**PREGNANCY IN MIND (PIM):** An evidence-based, preventative mental health service for parents to be. It aims to improve the emotional wellbeing of parents who are at risk of, or experiencing, mild or moderate anxiety and depression in the perinatal period; aims to build knowledge and learn new strategies, to help to protect them against anxiety and depression, and build parents' capacity to provide sensitive, responsive care to their babies. A group programme for parents to be between 12 and 26 weeks of pregnancy. One (or more) assessment home visits are offered; the face-to-face model provides eight 2-hour group sessions. PIM service continues to be delivered virtually, providing group support, peer support - tailored to what the parents need, a combination of virtual group work and individual calls. Both parents, partners/supporter can also attend. When appropriate parents are referred on to the Baby Steps programme, delivered by Swindon Borough Council. Parents are signposted to other local services where needed. PIM practitioner's monitor a parents emotional well-being by inviting parents to complete a questionnaires in relation to their anxiety and low mood (GAD7 and PHQ-9).

**To make a referral to Pregnancy In Mind, please call NSPCC Swindon on 01793 683100.**

**LETTING THE FUTURE IN (LTFI):** is a therapeutic service for children/young people aged 4-17 who have been sexually abused or sexually harmed by another child/young person. Children/young people who have been abused can feel confused and upset about what's happened to them, but having the chance to explore their thoughts and feelings can be really helpful. This service continues to be delivered face to face during the covid-19 pandemic.

**Discuss a referral:** Please call 01793 683100 if you wish to make a referral the duty practitioner can explore whether LTFI is the right service for the child/young person and how you can make a referral.

**SEEKING SOLUTIONS:** a solution focused service which offers children/young people aged between 7-18 help and support to deal with problems affecting their life, happiness or well-being. The service helps to improve the young person's confidence, skills and strengths, so they're better prepared to cope with any future problems. It employs solution-focused tools which use imaginative thinking to help the child think about what their life would be like without the problem. This service has continued to be offered virtually to children/young people and their families. Sometimes face-to-face support is offered in the service centre. This is a short term service, up to 8 sessions, after assessment.

**To make a referral:** please contact 01793 683100.

## Useful Resources

Childnet and the UK Safer Internet Centre work to support children, parents/carers and professionals working with children. A range of resources for all ages on most online safety issues are available for free at [www.childnet.com](http://www.childnet.com)

Two services detailed below can be accessed via [www.saferinternet.org.uk](http://www.saferinternet.org.uk)

**Professionals Online Safety Helpline:** supports any professional working with children with online safety issues. It takes calls/emails from teachers, social workers, police, medical professionals and provides support with issues relating to children in their care, as well as issues which may be affecting them directly, for example their the professional's own online reputation.



**Report Harmful Content:** supports those who want to get harmful content removed from the internet. It provides information on how to report to the major online service providers, but in addition, if you have made a report already to such a provider, and you are not satisfied with the outcome, you can report to RHC. They will review and they can escalate to the service provider, and in 95% of the cases where they escalate, the content is taken down. RHC deals with harmful content, i.e. content which breaks terms of service of online service providers but is still legal.

Illegal content online should be reported to the [Internet Watch Foundation](#).

## Child Safeguarding Practice Review Panel



An update from the [Child Safeguarding Practice Review Panel](#) highlights the Panel's work. Two actions are identified to promote an effective dialogue between local Safeguarding Partnerships (SPs) and the Panel. 1) Identification of a Panel member to link to each of the nine English regions to support discussions on issues of mutual interest. 2) Commissioning of an external organisation to undertake research/intelligence gathering through discussion with local SPs and other stakeholders.

Publication of the Panel's second annual report is due May 2021 and will draw on learning from Safeguarding Partners' Local Safeguarding Child Practice Reviews, Serious Case Reviews and Rapid Reviews and evidence from Safeguarding Partners' published Yearly Reports. This is the first time analysis has been undertaken and the report sets out key findings from a compliance audit and 'deep dive' analysis and aims to answer the following:

- i) To what extent do Safeguarding Partners' yearly reports meet the requirements set out in Working Together to Safeguard Children 2018.
- ii) What can we learn about the priorities and practice issues Safeguarding Partners have been focusing on?
- iii) What can we learn about how Safeguarding Partners are undertaking, sharing, disseminating and embedding learning from rapid reviews and local child safeguarding practice reviews?

68 yearly reports were reviewed for compliance against Working Together 2018 of which 19 were reviewed on a deep dive basis. At the time of writing 55 reports had not yet been submitted. Overall the report concludes that *"the yearly reports from Safeguarding Partnerships included in the 'deep dive' audit suggest resilience, creativity, and adaptability as partners took forward the new partnership arrangements during the unprecedented challenges of the COVID-19 pandemic. However, there was disparity in the quality of reports, with a need to move away from descriptive accounts that focus on detailing actions taken to focus instead on setting out the evidence behind approaches and their impact. Our analysis suggests the need for Yearly Reports to have a sharper focus on impact, evidence, assurance and learning"*. The Panel have written to the Department for Education, Department for Health and Social Care and the Home Office who are responsible for safeguarding arrangements more broadly. The full report will be published on the WWCS website as a linked reference document when the Panel Annual Report is published in May.

A summary of current and proposed areas of Panel focus are below.

**National reviews: Criminal Exploitation: [“It Was Hard to Escape”](#)** (March 2020) focussed on adolescents at risk of child criminal exploitation (CCE). There is liaison with government officials regarding implementation of the four key recommendations. ‘Phase 2’ will examine CCE cases received by the Panel since the report was published, evaluation of the implementation of the review’s findings, identifying good practice and surveying the wider national work.

**Sudden Unexpected Death in Infancy (SUDI):** Safeguarding children at risk from SUDI [‘Out of Routine’](#) (July 2020). Three national recommendations are being discussed with the Department of Health and Social Care, Public Health England and the National Child Mortality Database. Two areas for further research were identified and exploration about how might be progressed with partner organisations.

**Non Accidental Injury to Children under 1:** Work continues on the [third National Review about non-accidental injury \(NAI\) in children under one](#). In 2020, 35% of 514 children identified in significant incident notifications concerned children in this age group. A particular focus to the role of men since they are often the perpetrators of such harm and often ‘invisible’ to services. There is also very little research evidence. This includes interviews with a small group of men convicted of this type of offence. This is due for publication in June 2021.

**Thematic analyses: [Supporting Vulnerable Children and Families during Covid-19](#):** A thematic analysis of rapid reviews reported to the Panel during the initial Covid-19 outbreak (March - September 2020). Practice Briefing issued in December 2020 (circulated). Further thematic analysis on cases from October 2020 to March 2021.

**Safeguarding children who are not visible to schools (Elective Home Education):** A number of reviews received about children who were harmed or died and who were also being EHE. The Panel’s focus is specifically on those children who are vulnerable to safeguarding risks if they are not at school. Further analysis of cases is being conducted to examine the extent to which EHE has been a factor in the serious harm/death of a child.

**Domestic Abuse:** Some scoping work is being conducted recognising domestic abuse and its salience in so much child safeguarding practice. Also responding to The Ministry of Justice Response to the Consultation on *Assessing risk of harm to children and parents in private law children cases*, which recommended that the Panel conduct a statutory national practice based review of domestic abuse cases in private law children proceedings.

**Risk Assessment and Decision Making:** identified as a critical cross cutting theme in reviews. Also a perennial theme of very many historical inquiries about children who have died or been seriously injured. This project is currently being scoped.

**Serious Incident Notifications (SINs):** A considerable variation in how the criteria for serious harm are interpreted. A review of the pattern of SINs over the past three years; indicates some areas rarely/have never notified an incident. Conversely, notifications have been made which in the Panel’s view do not meet the criteria for serious harm. It is recognised this is a complex issue and there will be some engagement with some individual SPs to better understand their decision-making.

## Online webinar recording – Introduction of the Liberty Protection Safeguards (LPS)



social care  
institute for excellence

This webinar recording is an opportunity to learn more about the key changes under LPS, the journey and progress to date and how SCIE will be working with the sector to support this transition.

[Registration is required to view.](#)

The planned implementation date of April 2022, the new LPS will bring reform and a new system which will seek to further protect the liberty of those who do not have mental capacity to make decisions about their care. This represents a significant shift in practice and requires both awareness and change for both individuals and organisations, as part of this journey to implementation.

# NSPCC Learning

**Safeguarding and sport:** The NSPCC's Child Protection in Sport Unit (CPSU) has published a new animation looking at how sport can safeguard children. **Watch the animation:** [How can sport safeguard children?](#)

**Supervision orders:** Nuffield Family Justice Observatory (Nuffield FJO) has published findings from a survey about the use of supervision orders in care proceedings in England and Wales. A supervision order places a duty on the local authority to "advise, assist and befriend" a child but, unlike a care order, does not give them parental responsibility. **Read the news story:** [New survey supports recommendations for a review of supervision orders in care proceedings](#); **Read the survey findings:** [Supervision orders in care proceedings: survey findings \(PDF\)](#)

**Body image:** The House of Commons Women and Equalities Committee has published a report following an inquiry into body image in England. **Read the report:** [Changing the perfect picture: an inquiry into body image \(PDF\)](#)

**Understanding attachment in children:** NSPCC Learning has published new content on understanding attachment in children.

**Read the content:** [Understanding attachment in children](#)

**Talking to children about abuse:** NSPCC Learning has published findings from a pilot study of "Talk to Me" an interactive learning tool. **Read the report:** [Pilot shows interactive learning tool boosts adults' confidence in talking to children about abuse](#). **NSPCC Learning** [Learn to navigate difficult conversations with children about abuse with 'Talk to Me'](#)

**Care leavers:** In an article in Community Care, a care experienced former social worker describes the experience of being a child in care and how this separated them from their peers and left them unsupported in adulthood. **Read the news story:** [How the many small differences in looked-after children's lives shape the inequalities they face as adults](#). **NSPCC Learning:** [Looked after children](#)

**Care applications:** Cafcass has published care application statistics for England for March 2021. **View the data:** [Public law data: number of care applications received](#)

**Coronavirus: impact on children and young people's mental health:** The All Party Parliamentary Group for a Fit and Healthy Childhood has published a report. **Read the report:** [The COVID generation: a mental health pandemic in the making \(PDF\)](#). **NSPCC Learning:** [Child mental health](#)

**Cultural barriers to disclosing child sexual abuse:** Farrer & Co has released a podcast discussing cultural barriers to disclosing child sexual abuse. **Listen to the podcast:** [Cultural barriers to disclosing](#)



[child sexual abuse](#). **NSPCC Learning:** [Recognising and responding to abuse](#)

**Domestic abuse:** The Ann Craft Trust has released a podcast on discussing domestic abuse and coercive control and how this abuse affects the physical and mental health of the whole family. **Listen to the podcast:** [Domestic abuse and coercive control: telling untold stories: safeguarding matters](#). **NSPCC Learning:** [Protecting children from domestic abuse](#)

**Early years:** Birth to 5 Matters have published non-statutory guidance for the Early Years Foundation Stage (EYFS) in England.

**Read the guidance:** [Birth to 5 matters: non-statutory guidance for the Early Years Foundation Stage](#)

NSPCC Learning has published an evaluation of delivering Pregnancy in Mind (PiM), a preventative programme for parents who are experiencing or at risk of mild to moderate anxiety and depression during the perinatal period, virtually during the coronavirus pandemic.

**Read the evaluation:** [Delivering Pregnancy in Mind virtually: an evaluation of the process](#). **NSPCC Learning:** [Working with families](#). [COVID-19: safeguarding and child protection](#)

**Child protection in sport:** The NSPCC Child Protection in Sport Unit (CPSU) has updated the briefing on responding to information about possible risks to children to help sports clubs and organisations risk assess any concerns around the membership of people with criminal records. **Read the content:** [Responding to information about possible risks to children](#)

**Domestic Abuse Act:** The Domestic Abuse Bill received Royal Assent on 29 April 2021. The Domestic Abuse Act explicitly recognises children as victims if they see, hear or experience the effects of abuse and includes a legal definition of domestic abuse which incorporates a range of abuses beyond physical violence, including emotional, coercive or controlling behaviour, and economic abuse.



**Read the news story:** [Landmark Domestic Abuse Bill receives Royal Assent](#). **Read the Act:** [Domestic Abuse Act](#). **NSPCC Learning** [Protecting children from domestic abuse](#)

**Child sexual abuse disclosure:** The Independent Inquiry into Child Sexual Abuse (IICSA) has published a report exploring the difficulties discussing or disclosing child sexual abuse experienced by some victims and survivors from ethnic minority communities in England and Wales. **Read the report:** [Engagement with support services for ethnic minority communities](#). **NSPCC Learning** [Recognising and responding to abuse](#)

**Vulnerable children and young people:** The Department for Education (DfE) has published data from the vulnerable children and young people survey of local authorities in England looking at the impact of the coronavirus on children's social care. **Read the report:** [Vulnerable children and young people survey](#)

**Children missing from care:** Missing People has published a report on children and young people's views on being reported missing from care. **Read the report:** [Children's views on being reported missing from care \(PDF\)](#)

**Youth justice:** Agenda and the Alliance for Youth Justice (AYJ) have published a briefing paper on the experiences of young women transitioning from the youth to adult criminal justice system in England and Wales as they turn 18. **Read the briefing paper:** [Falling through the gaps: young women transitioning to the adult justice system \(PDF\)](#)

	<p><b>Bullying during the coronavirus pandemic:</b> The Anti-Bullying Alliance has published findings from a survey of pupils, school staff, and parents and carers in England about bullying and relationships, carried out during the week 1-7 February 2021, when some children were in school but most were taking part in learning at home. <b>Read the report:</b> <a href="#">Bullying and the pandemic: a picture of how bullying has changed during COVID-19 (PDF)</a>. <b>NSPCC Learning</b> <a href="#">Protecting children from bullying and cyberbullying</a></p> <p><b>Children’s media use and attitudes:</b> Ofcom has published a report looking at the media use and attitudes of children and young people aged 5-15. <b>Read the reports:</b> <a href="#">Children and parents: media use and attitudes report 2020/21 (PDF)</a> <a href="#">Children's Media Lives (PDF)</a> <b>NSPCC Learning:</b> <a href="#">Social media and online safety</a></p> <p><b>Online grooming:</b> The Internet Watch Foundation (IWF) has published figures from the IWF Annual report 2020 which shows the growing risk of children, particularly girls aged 11-13, being targeted online by criminal sex predators. <b>Read the report:</b> <a href="#">Face the facts</a> <b>Visit the campaign website:</b> <a href="#">Gurls Out Loud</a> <b>NSPCC Learning</b> <a href="#">Protecting children from grooming</a></p> <p><b>Online safety:</b> The UK Safer Internet Centre has published a report looking at the reach of Safer Internet Day 2021 and the impact it had on children, young people, parents, carers, and teachers. <b>Read the report:</b> <a href="#">Safer Internet Day 2021 (PDF)</a>. <b>NSPCC Learning:</b> <a href="#">Online safety training</a></p>
<p style="text-align: center;"><b>Swindon VX</b></p> 	<p>The first Swindon VX event showcasing Swindon’s voluntary sector. <i>Swindon VX</i> ran over the week April 26<sup>th</sup> to 30<sup>th</sup> with a series of presentations and discussions. If you were unable to attend you can access the recordings of the sessions which will be uploaded to the relevant listing on the VX-Directory. Access <a href="#">Swindon VX Directory</a>, which contains key contact details and service information for all presenters.</p>
	<p>If you have any information that can be included within the fortnightly SSP newsletter please send the information to the <a href="mailto:safeguardingpartnership@swindon.gov.uk">safeguardingpartnership@swindon.gov.uk</a></p>